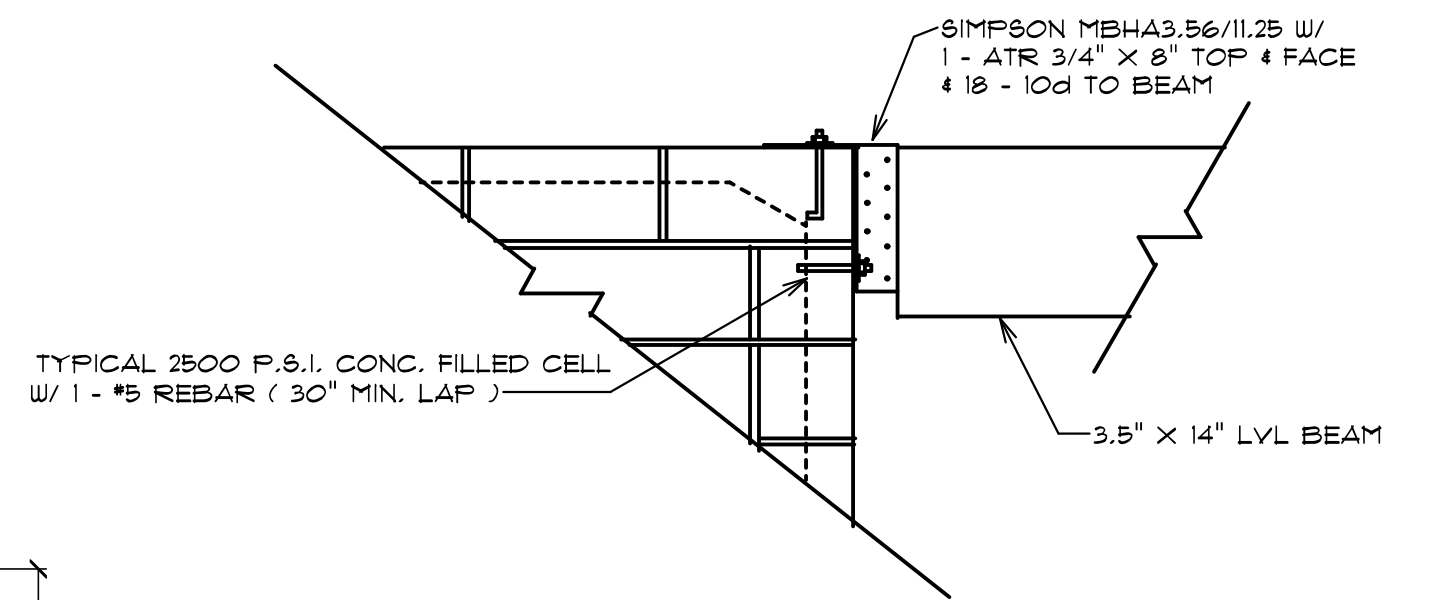
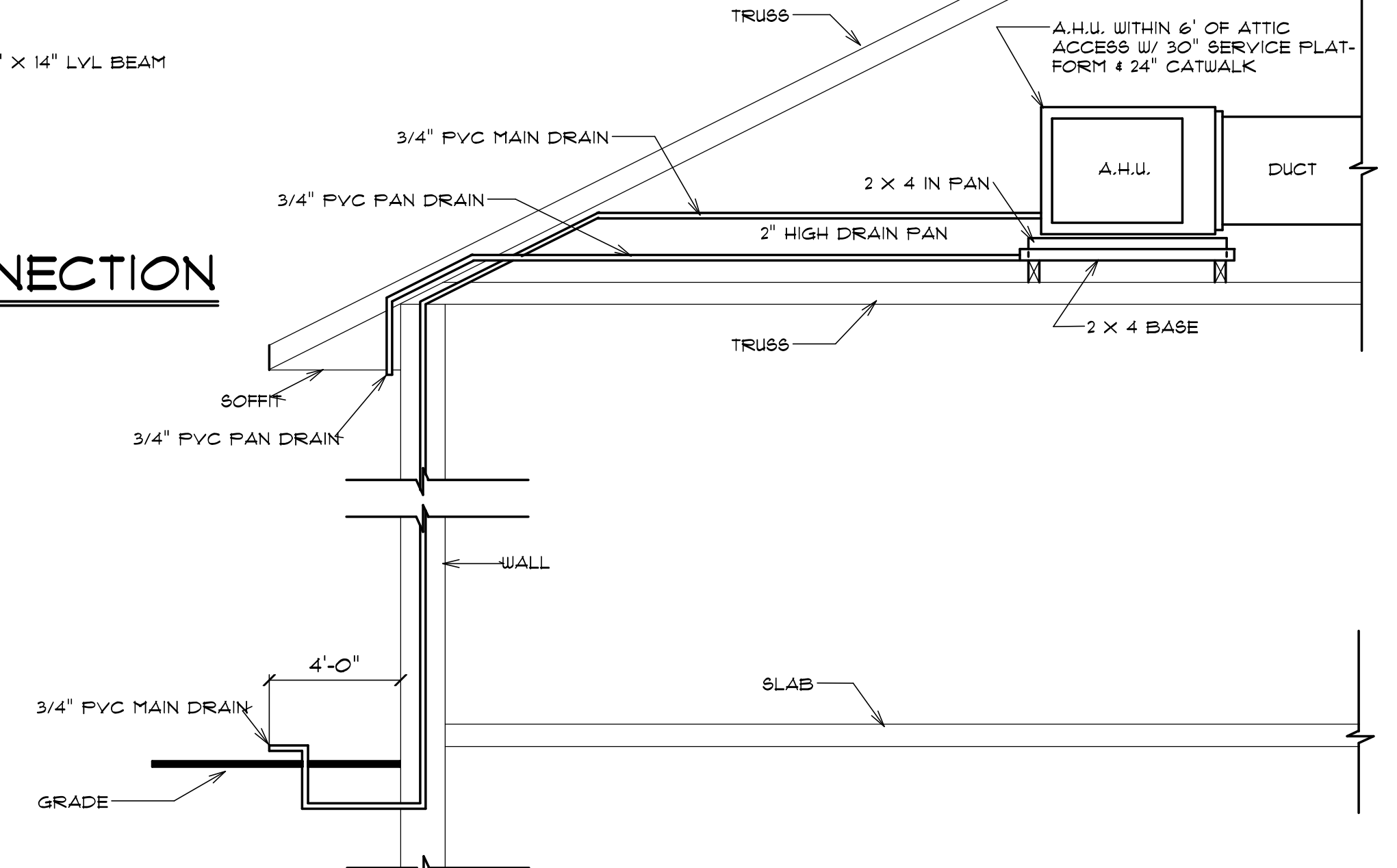


FLOOR PLAN

SCALE: 1/4" = 1'-0"



BEAM TO WALL CONNECTION



A.H.U. IN ATTIC DETAIL

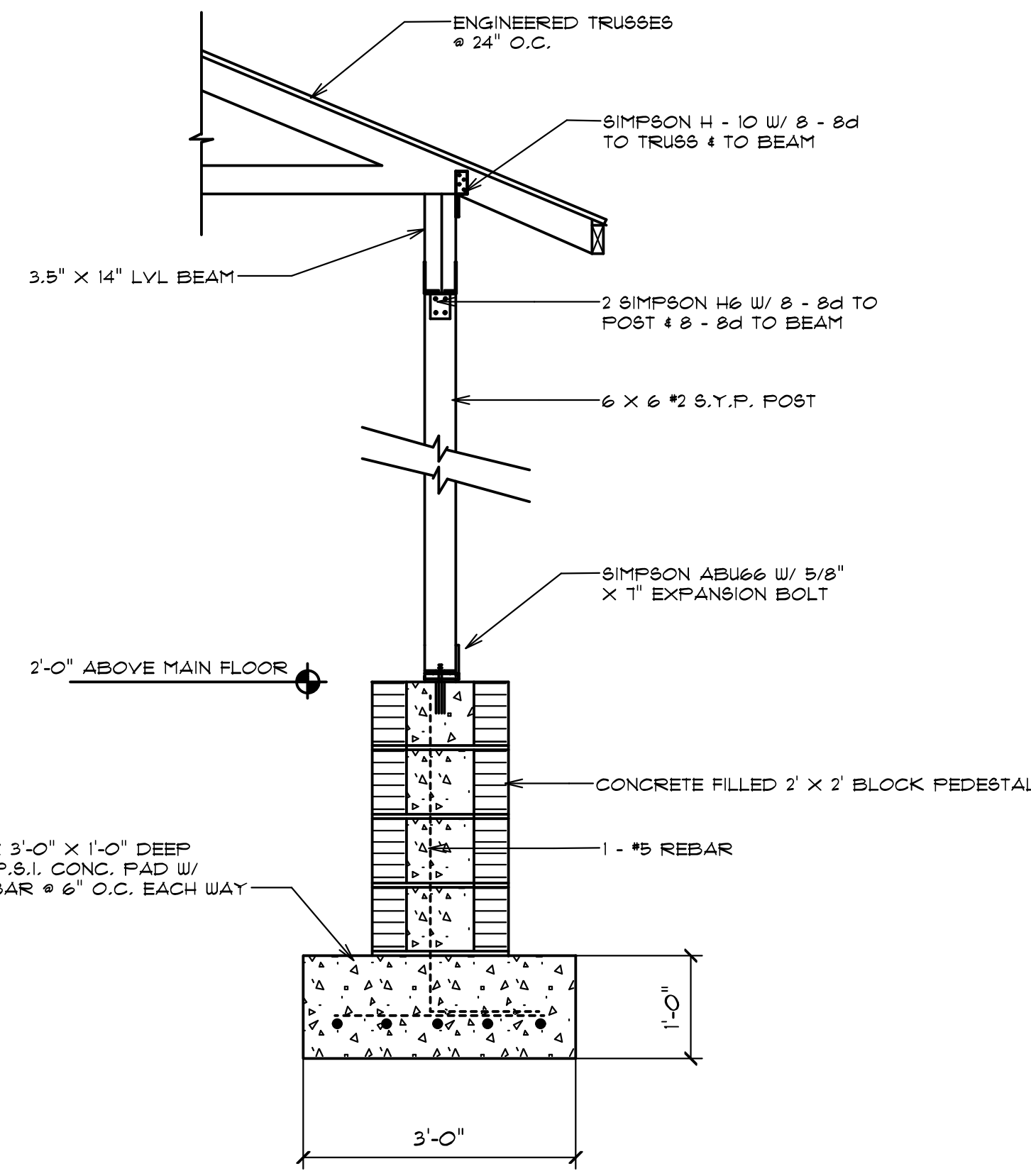
CAST-CONCRETE LINTEL SCHEDULE

LINTEL NO.	LENGTH	TYPE
L-1	1'-6"	2F32-1B/1T
L-2	10'-6"	2F32-1B/1T
L-3	5'-10"	2F32-1B/1T
L-4	4'-6"	2F32-1B/1T
L-5	11'-4"	2F32-1B/1T
L-6	2'-10"	2F32-1B/1T
L-7	4'-6"	2RF30-1B/1T

NOTE:
 2500 P.S.I. CONCRETE FILLED CELLS W/ 1 - #5 REBAR @ CORNERS & EACH SIDE OF DOORS & WINDOWS W/ MAX. SPACING OF 8'-0" IN BETWEEN (25" MIN. LAP FROM FTG. BAR TO WALL BAR)

FOOTAGES

HEATED & COOLED	1490 S.F.
GARAGE	343 S.F.
FRONT PORCH	142 S.F.
TOTAL UNDER ROOF	1975 S.F.



POST & BEAM DETAIL @ ENTRY

ESG
 J. LEE SMITH, P.E.
 P.E. #36171
 ENGINEERING SERVICES GROUP, LLC
 391 W. ALFRED ST.
 TAVARES, FL 32178
 CA # 8886
 PHONE: (352) 388-1735

RISK CATEGORY II
 EXPOSURE CATEGORY C
 TOPOGRAPHIC FACTOR = 1.0
 WIND DIR. FACTOR Kd = 0.85
 GUST EFFECT, G = 0.85
 FULLY ENCLOSED
 DESIGN PRESSURES FOR WALL COMPONENTS AND CLADDING = +42.1 PSF -57.1 PSF (WORST CASE)
 GARAGE DOOR DESIGN PRESSURES:
 +22.4 MPH, -25.3 MPH (WORST CASE)
 ROOF LIVE LOAD = 20 PSF
 FLOOR LIVE LOAD = 40 PSF

PROJECT: LAKE ELSIE
 DATE: 8-14-11
 REVISED:
 THIS STRUCTURE HAS BEEN DESIGNED IN ACCORDANCE WITH AND MEETS THE REQUIREMENTS OF SECTION R301.1 OF THE FLORIDA RESIDENTIAL BUILDING CODE, 2014 EDITION, AND ASCE 1-10 FOR Vult.=140 MPH SPEED, Vmax=108 MPH

SHEET #5 OF 10